

SCLERAL LENS APPLICATION AND REMOVAL

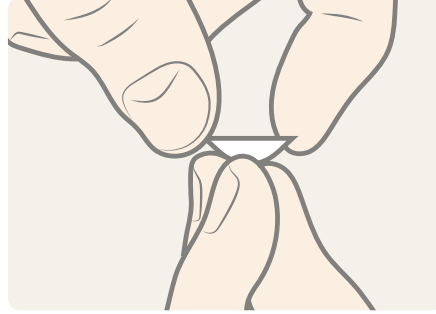
THREE FINGER METHOD

Always have clean hands when handling scleral contact lenses. A mirror and a clean towel underneath the area can be helpful. Always start with the same eye to avoid mixing up lenses.

APPLYING LENSES



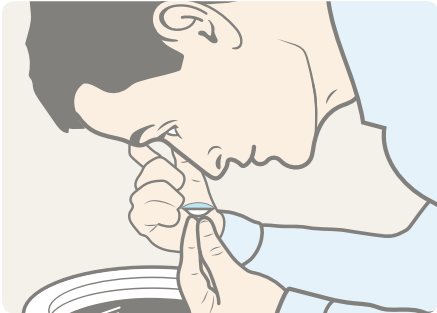
Rinse lens with ScleralFil™ preservative free saline solution.



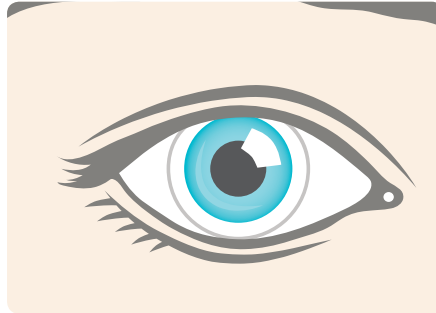
Center the lens on your thumb and index and middle fingers.



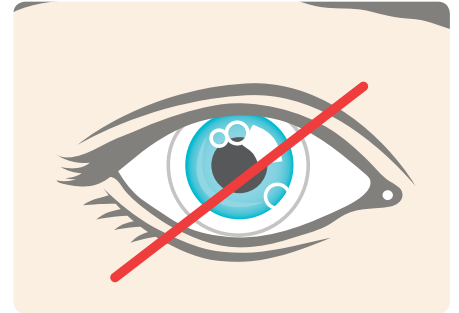
Fill the lens with ScleralFil, forming a convex shape. Don't let it overflow.



Bend over and look straight down. While holding your eyelids wide open, set the lens on the center of your eye.



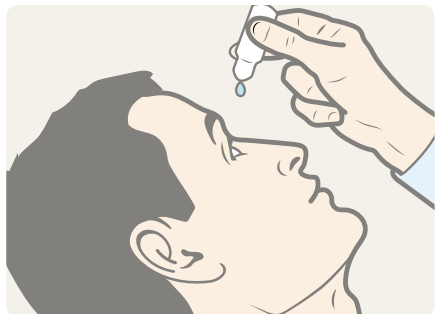
Blink. Blot excess solution. Make sure that the lens is centered and comfortable.



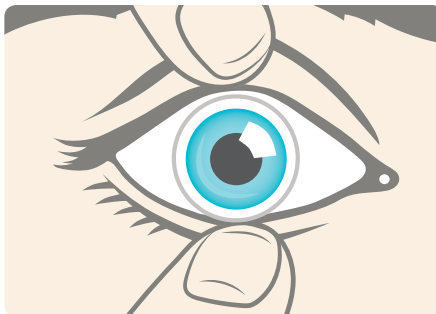
Air bubbles can cause discomfort, poor vision, and unusual glare. If any air bubbles are present, reapply.

REMOVING LENSES

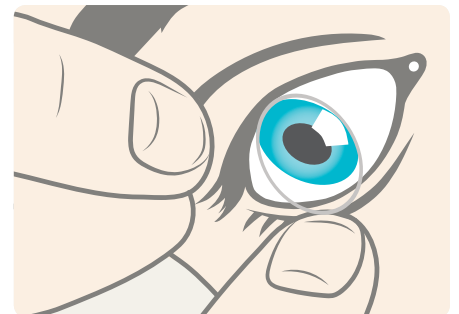
(CAN ALSO BE REMOVED WITH PLUNGER — SEE REVERSE)



Insert 1 - 2 drops of ScleralFil to help loosen the lens.



Pull your lower eyelid down and then up to get it under the lower edge of the lens. Press upward to loosen the lens.



While leaning over a towel, lift the edge of lens with your other hand and remove the lens.

Follow doctor-recommended regimen in caring for your lenses.
ScleralFil is a rinsing and insertion solution and is not intended for storage of your lenses. Always use fresh solution.
Do not use tap water to rinse your lenses.
Replace your lens case as recommended by your eye care professional.
ScleralFil™ is available at all Spectacle Warehouse outlets.

WWW.CLSSA.CO.ZA



Contact Lens Society
of South Africa

SCLERAL LENS APPLICATION AND REMOVAL

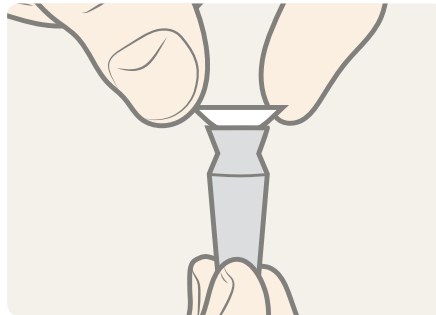
PLUNGER METHOD

Always have clean hands when handling scleral contact lenses. A mirror and a clean towel underneath the area can be helpful. Always start with the same eye to avoid mixing up lenses.

APPLYING LENSES



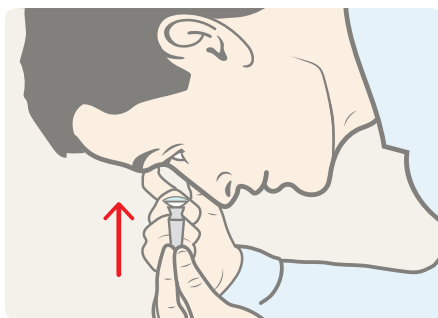
Rinse lens with ScleralFil™ preservative free saline solution.



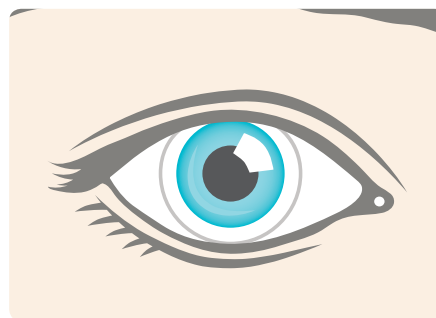
Set the lens on the center of the plunger.



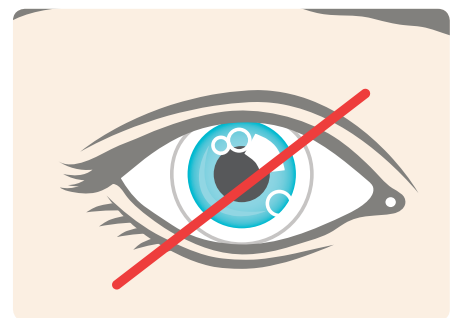
Fill the lens with ScleralFil, forming a convex shape. Don't let it overflow.



Bend over and look straight down. While holding your eyelids wide open, set the lens on the center of your eye.



Blink. Blot excess solution. Make sure that the lens is centered and comfortable.

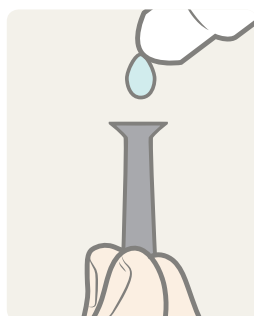


Air bubbles can cause discomfort, poor vision, and unusual glare. If any air bubbles are present, reapply.

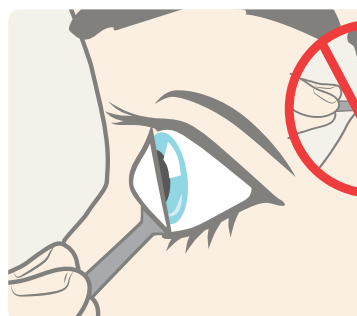
REMOVING LENSES



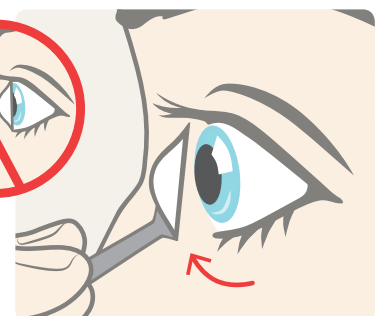
Insert 1 - 2 drops of ScleralFil to help loosen the lens.



Wet the plunger with 1 - 2 drops of ScleralFil.



Gently attach the plunger to the edge (NOT the center) of the lens.



Gently tilt up and out on the lens and carefully remove it from your eye.

Follow doctor-recommended regimen in caring for your lenses. ScleralFil is a rinsing and insertion solution and is not intended for storage of your lenses. Always use fresh solution. Do not use tap water to rinse your lenses. Replace your lens case as recommended by your eye care professional. ScleralFil™ is available at all Spectacle Warehouse outlets.

WWW.CLSSA.CO.ZA



Contact Lens Society
of South Africa